



Universität
Zürich ^{UZH}

Digital Society Initiative



APPLY NOW

dizh.ch

DSI Info Event – DIZH Project Call 2024

UZH Edition

Markus Christen, Gabriele Prohaska

30 August 2024



Agenda

- General Information on the DIZH Project Call 2024
- Relevant dates
- Key Aspects for successful DIZH projects
- Budget & Matching Funds @ UZH
- Additional information
- Discussion
- Contact

General Information – What is the DIZH Project Call?

- Projects focus on forward-looking and beneficial solutions to relevant questions and problems from **practice** in the context of digital transformation → contribution of practice partner stated in the Letter of intent or (in justified cases) impact on practice
- Projects have a **disruptive** and forward-looking character and pursue radically new approaches
- Projects with different forms of **cooperation** between the participating universities and practice partners => inclusion of at least one more DIZH university or «super-interdisciplinarity» within one DIZH university
- Projects are not restricted to a specific research area
- Duration from **1 to 3 years** and between **CHF 100'000 and CHF 300'000**
- Total project funds available for distribution: 3.0 - 3.5 million CHF
- **Eligible applicants** need to be employed by one of the 4 DIZH institutions for the period of the proposed project

Relevant dates for the DIZH Project Call 2024

- Fix your **cooperation** with the other DIZH universities as soon as possible.
- PHZH's submission deadline of budget, title and abstract is latest by **6 September 2024**.
- ZHdK has to apply internally for their matching funds latest by **19 September 2024**.
- ZHAW has to apply internally for their matching funds latest by **24 September 2024**.
- UZH doesn't have an internal pre-approval process.
- Application deadline: **1 October 2024 - 12 noon**
- Evaluation until February 2025; final decision latest by end of **March 2025**
- Earliest start of projects: 1 April 2025
- Latest possible start: **1 October 2025**
- **Note:** After approval you have 3 months to set up an agreement with your practice partners and between all involved DIZH universities.

More information on the differences between and important dates of the DIZH universities can be found on the DIZH website <https://www.dizh.uzh.ch/en/activities/innovationprogram/2024-1-project-call/> - University specific information

Key Aspects for successful DIZH Projects

- Fulfill **basic requirements**: good to read, within the provided template, maximum length, short CVs, etc.
- Stick to the **page limit**.
- Demonstrate the **impact on practice** (Praxis): questions/problems addressed should be relevant for defined stakeholders (not just “academic” questions): Clarify the stakeholder group, sketch a plan how to interact with them, don’t forget outreach activities, etc...
Practice partners can not receive money from the project (then they would be subcontractors).
Practice partners must be financially and personally independent.
- Clarify the **innovation** of the project: show how the question/problem is novel and risky (i.e., possibility of failure is not a “killer criterion”).
For details: https://dizh.ch/wp-content/uploads/2023/09/20230616_Innovationsverstaendnis-und-Evaluationskriterien.pdf
- Make sure that the question (and team) is sufficiently **interdisciplinary**: both regarding involved disciplines and DIZH universities.

Budget Template DIZH @ UZH:

- Different **approach** in the budget template:
 - First part of the template = Expenses: Which (direct) costs are related to my DIZH Project (per DIZH university)?
 - Second part of the template = Contributions: How are these overall costs funded (by DIZH, by matching funds).
 - Costs that are paid with your own contribution have to be included in the expenses.
- Calculatory **overhead** to represent the overall infrastructure costs of the DIZH universities for rooms and central services is 20% of the total project costs and counts as «matching funds» (on the contribution side).
- Cost for **assets are not allowed**, not even as matching funds. Asset @ UZH = can be used more than one year and cost are \geq CHF 10'000.
- **Subcontracting** (services from third parties) are only allowed up to CHF 100'000 or the maximum of 20% of the total project costs (of all partners) -> whatever is lower.
- **Practice partner** can only provide cash contributions (as third-party funds).

TOTAL PROJECT COSTS (without PP)	80'000	80%
OVERHEAD (OH)	20'000	20%
TOTAL PROJECT COSTS INCL. OH	100'000	100%



REQUIRED DIZH FUNDS (50% OF PC)	50'000	50%
*Transfer value to Selectus	50'000	50%
MATCHING FUNDS TOTAL		
*Transfer value to Selectus	50'000	50%



Overhead	20'000	20%
Own contributions to be made	30'000	30%

Matching Funds @ UZH

- UZH does **not** provide a pot for Matching Funds, you have to provide it yourself!
- Matching funds can be in the form of **preliminary work** from projects related to the submitted project, dating back no longer than 12 months before the application date (= 1 October 2023).
- The financial responsible person has to issue a confirmation of matching funds. Templates via dizh@dsi.uzh.ch
- Matching from **university funds = «Redeployment of existing funds»** (green section in the template):
 - Staff or material paid from Betriebskredit, Einrichtungskredit or other university funds → your salary or 10% of the professor can count as in-kind-contribution
- Matching from **third-party funds = «Third-party funds acquired»** (content must be related & connection must be confirmed in the matching fund confirmation; orange section)
 - Staff or material paid from third party grants
- **Exception:** DIZH funds can't be matching funds

You can enter numbers in the fields marked *light orange*. You can enter numbers in the fields marked *light green*.

TEST			Project description		01.04.25 Planned start date	
			Applicant (name, HS)		36.00 duration in months	
			Participating universities			
					100%	0%
					UZH	ZHAW
DETAIL			CHF	in %		
minus practice partner			-		-	-
TOTAL PROJECT COSTS (without PP)			479'946	80%	479'946	-
OVERHEAD (OH)			119'987	20%	119'987	-
TOTAL PROJECT COSTS INCL. OH			599'933	100%	599'933	-
PROJECT FUNDING:						
TOTAL PROJECT COST *Transfer value from B64 to Selectus			599'933	100%	599'933	100%
REQUIRED DIZH FUNDS (50% OF PC)			299'966	50%	299'966	50%
*Transfer value from B65 to Selectus						
REQUIRED MATCHING FUNDS TOTAL			299'966	50%	299'966	50%
MATCHING FUNDS COVERAGE:						
MATCHING FUNDS TOTAL *Transfer value from B69 to Selectus, if C95 = 100%			299'966	50%	299'966	50%
Overhead			119'987	20%	119'987	20%
Own contributions to be made			179'980	30%	179'980	30%
Dissolution of reserves (secured)			-		-	-
Postdoc NN1 (PI) funded for 12 months by funds of the chair, 60%			59'070		59'070	
lump sum external speakers paid by funds of the chair			2'700		2'700	
additional lines: Mark line 78 and insert with 'ctrl c' and 'ctrl +'			-		-	
Redeployment from existing income (secured)			61'770		61'770	
SNF project XYZ - Postdoc NN1 (PI) funded for 24 months, 60%			118'140		118'140	
travel expenses (partially funded by SNF)			70		70	
additional lines: Mark line 85 and insert with 'ctrl c' and 'ctrl +'			-		-	
Third-party funds acquired/to be acquired (secured)			118'210		118'210	
TOTAL OWN CONTRIBUTIONS			179'980	100%	179'980	100%

Simplified Example! – UZH is alone in this example! Not recommend for Project Call.

Simplified Example (without other Universities)

- To receive maximum funding of 300 kCHF (A) you need a total project sum of 600 kCHF (B) (including calculatory overhead of 120 kCHF (C))
- → needed own contribution of all universities is 180 kCHF (see slide before, total project cost x 30% as overhead counts as part of the matching funds)
- Of your expected direct costs (480 kCHF; D) => 300 kCHF will be funded by DIZH = 62.5%
- Your own contribution has to be included in the direct cost section! If you increase your own contribution, the funding increases.
- Play around with the budget template
- Feel free to ask questions.
- Red corners contain explanatory notes.
- Check the **guide** on the DIZH website:
https://www.dizh.uzh.ch/wp-content/uploads/2024/07/Slides-Generic-Info-DIZH_PC2024.1-Schreibgeschuetzt.pdf

DETAIL	CHF	in %	100% UZH	
UZH personnel (carried over from "Personnel costs)	460'246	99%	460'246	
lump sum for external speakers	2'700	1%	2'700	
TOTAL PERSONNEL INTERNAL	462'946	77%	462'946	77%
Workshop catering	5'000	83%	5'000	
travel expenses	1'000	17%	1'000	
TOTAL COST OF MATERIALS	6'000	1%	6'000	
TOTAL SUBCONTRACTING	5'000	1%	5'000	
TOTAL PRACTICE PARTNER	-	0%	-	
TOTAL DEVICES / EQUIPMENT	6'000	1%	6'000	
TOTAL PROJECT COSTS (with PP)	479'946		479'946	
minus practice partner	-		-	
TOTAL PROJECT COSTS (without PP)	479'946	80%	479'946	
OVERHEAD (OH)	119'987	20%	119'987	
TOTAL PROJECT COSTS INCL. OH	599'933	100%	599'933	
PROJECT FUNDING:				
TOTAL PROJECT COST *Transfer value from B64 to Selectus	599'933	100%	599'933	100%
REQUIRED DIZH FUNDS (50% OF PC)	299'966	50%	299'966	50%
*Transfer value from B65 to Selectus				
REQUIRED MATCHING FUNDS TOTAL	299'966	50%	299'966	50%

Simplified Example! – Only UZH in this example! Not recommend for Project Call.

Simplified Example – Detail personnel costs

HS	Person	Personnel category	Task	degree of employment	months	Annual costs	Proportional project costs CHF	year 1	year 2	year 3	Project costs (control calculation)
UZH	NN1 DIZH funded	Doctoral students 1st year (generally 80% Pensum)	PhD	80%	12	71'355	57'084	100%			57'084
UZH	NN1 DIZH funded	Doctoral students 2nd year (generally 80% Pensum)	PhD	80%	12	73'630	58'904		100%		58'904
UZH	NN1 DIZH funded	Doctoral students 3rd and 4th year (generally 80% Pensum)	PhD	80%	12	75'905	60'724			100%	60'724
UZH	NN2 DIZH funded	Post-Docs (100% Pensum, LK 18/LS03)	PI	20%	36	118'139	70'883	33%	33%	34%	70'883
UZH	NN2 Own contribution	Post-Docs (100% Pensum, LK 18/LS03)	PI	60%	36	118'139	212'650	33%	33%	34%	212'650
UZH						-	-				error
UZH							-				error
UZH							-				error
UZH							-				error
UZH							-				error
UZH							-				error
UZH							-				error
TOTAL PERSONNEL COSTS UZH							460'246				

Insert lines: Select line 17 (incl. dropdown menu) or line 22 (without dropdown menu) and insert another line with 'ctrl c' and 'ctrl +'.

Example: Postdoc works 80% for 36 months in total for the project, thereof 60% are financed by SNF-Funding for 24 months and 12 months by funds of the chair

→ 20% of the Postdoc is financed and one PhD over 3 years by DIZH

— Allocation of expected cost occurrence has to be done in per cent (see special situation for PhDs above)

— Your own contribution has to be included in the direct cost section! If you increase your own contribution, the funding increases.

Simplified Example! – Only UZH in this example! Not recommend for Project Call.

Further information

— Helpful **links** on the DIZH websites:

— Call website: <https://www.dizh.uzh.ch/en/activities/innovationprogram/2024-1-project-call/>

— FAQs with practical guide : <https://www.dizh.uzh.ch/en/activities/innovationprogram/f-a-q/>

— Search for a practice partner in the canton of Zurich?

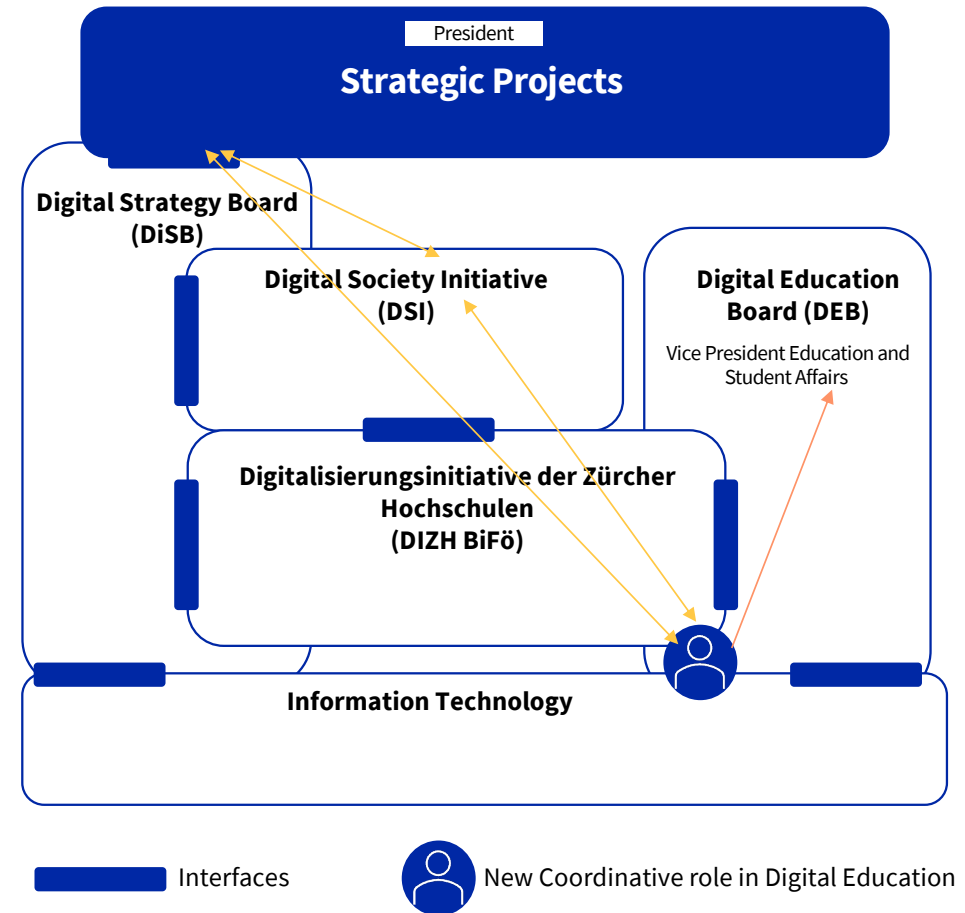
— The **Digital Innovation Hub (DIH)** systematically examines current and future developments and technologies in order to identify opportunities and risks for the canton and the administration in particular at an early stage. As a new contact point, the DIH will initially network innovation players within the administration, create space for interdisciplinary exchange with research institutions and promote the implementation of innovative projects.

— Members of the DIZH universities who are concerned with the use or impact of current and future technologies and are interested in involving the cantonal administration and/or the population can contact Maren Kottler, Head of the Digital Innovation Hub.

Coordinative new Role in Digital Education

This role ensures in particular that:

- all overarching digital education projects, proposals, or ideas relevant to teaching and studying at UZH are discussed with Vice President Education and Student Affairs before the start of a project;
- the Vice President Education and Student Affairs is informed early and continuously updated about planned initiatives;
- redundancies are avoided and planned initiatives and projects are coordinated with each other.



Please Contact Me:

Alexandra Jansky

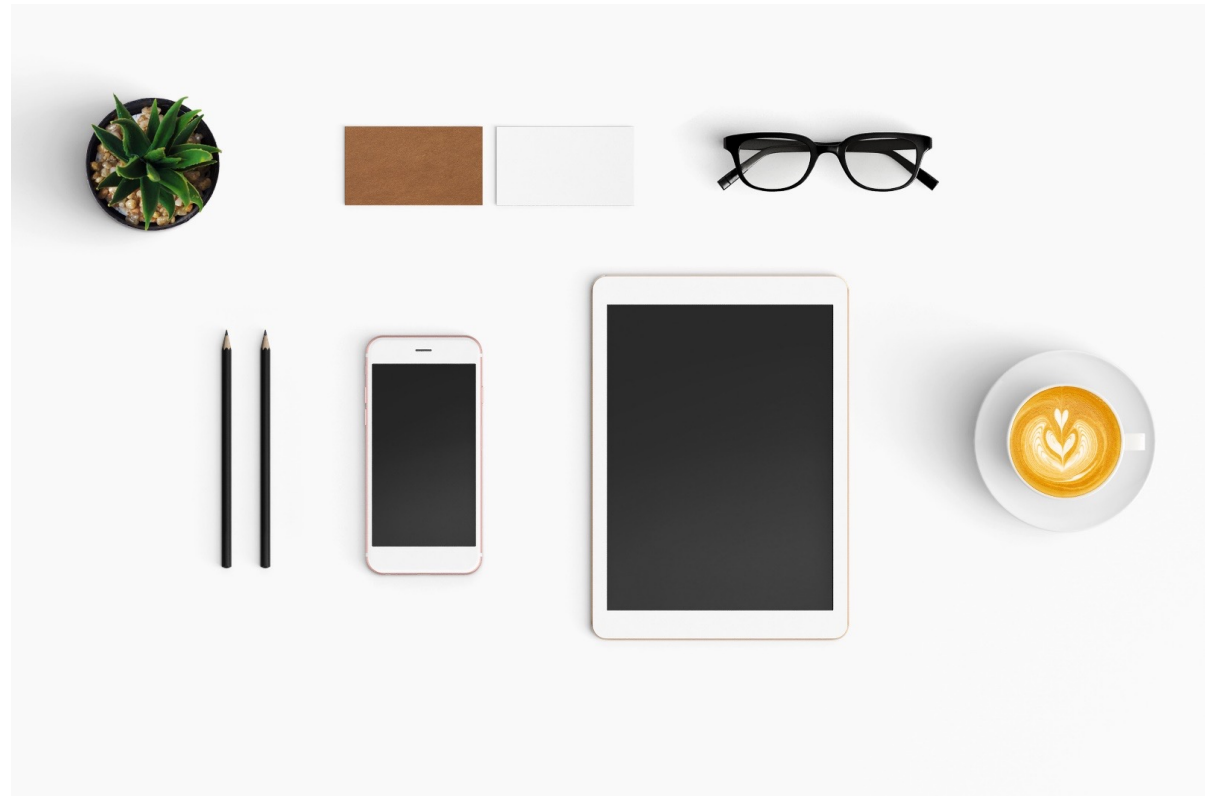
Educational Development

Teamleader Innovation and Digital
Education

Email:

Alexandra.jansky@uzh.ch

Gerne auch per Teams



Contact

General questions: dizh@dsi.uzh.ch

Questions regarding financial aspects:
gabriele.prohaska@uzh.ch

Questions regarding content & feedback to
ideas: markus.christen@dsi.uzh.ch

